

PLAN OF SUBDIVISION

EDITION 1

PS632968A/S5

LOCATION OF LAND

PARISH: KIRRAK
TOWNSHIP: INVERLOCH
SECTION: 5
CROWN ALLOTMENT: 1 (PART)
CROWN PORTION: —
TITLE REFERENCE: VOL. FOL.
 VOL. FOL.
LAST PLAN REFERENCE: PS632968A/S4 (LOT S11)
 PS632968A (LOT A)
POSTAL ADDRESS: LINDSEY CLOSE
 (at time of subdivision) INVERLOCH 3996

Council Name: Bass Coast Shire Council
 SPEAR Reference Number: S179432T

MGA CO-ORDINATES: E: 390840 ZONE: 55
 (of approx centre of land in plan) N: 5723160 GDA 2020

VESTING OF ROADS AND/OR RESERVES

NOTATIONS

IDENTIFIER	COUNCIL/BODY/PERSON
NIL	NIL

LOTS ON THIS PLAN MAY BE AFFECTED BY ONE OR MORE OWNERS CORPORATIONS. SEE OWNERS CORPORATION SEARCH REPORT(S) FOR DETAIL.
LOT NUMBERS 1 TO 81 (BOTH INCLUSIVE), LOTS 98 TO 119 (BOTH INCLUSIVE) AND LOTS S1 TO S11 (BOTH INCLUSIVE) HAVE BEEN OMITTED FROM THIS PLAN.
LOT S12 IS IN 3 PARTS.

NOTATIONS

DEPTH LIMITATION: 15.24m BELOW THE SURFACE

SURVEY:
 This plan is based on survey.

STAGING:
 This is a staged subdivision.
 Planning Permit No.160229

This survey has been connected to permanent marks No(s). 120

In Proclaimed Survey Area No. —

CP No.1 DENOTES COMMON PROPERTY No.1

EASEMENT INFORMATION

LEGEND: A - Appurtenant Easement E - Encumbering Easement R - Encumbering Easement (Road)

SECTION 12(2) OF THE SUBDIVISION ACT 1988 APPLIES TO ALL THE LAND IN THIS PLAN.

Easement Reference	Purpose	Width (Metres)	Origin	Land Benefited/In Favour Of
SEE PAGE 2 FOR EASEMENT TABLE DETAILS				

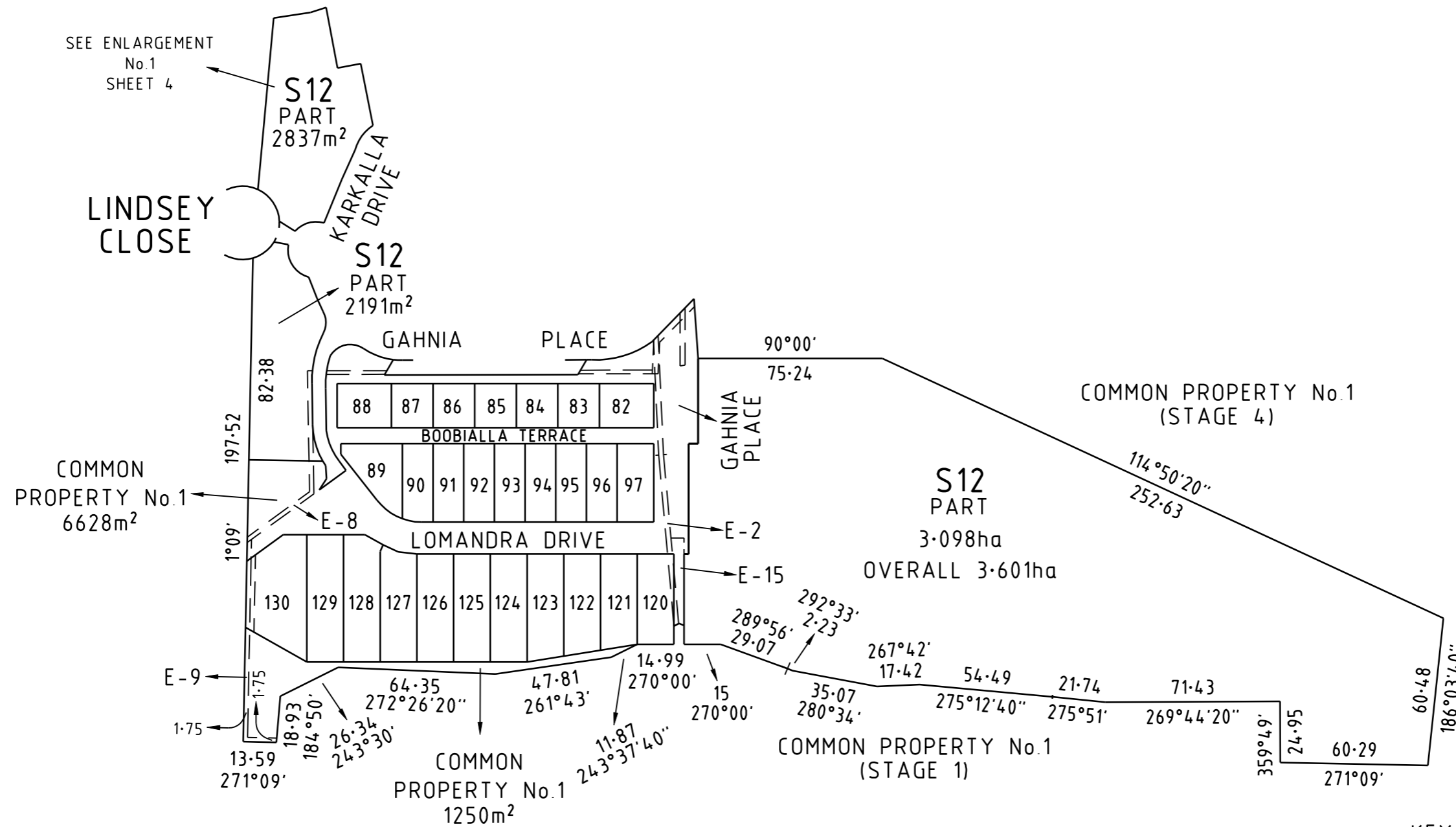
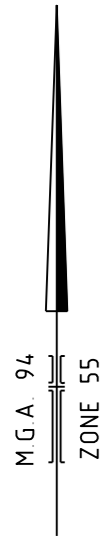
EASEMENT INFORMATION

LEGEND: A - Appurtenant Easement E - Encumbering Easement R - Encumbering Easement (Road)

SECTION 12(2) OF THE SUBDIVISION ACT 1988 APPLIES TO ALL THE LAND IN THIS PLAN.

Easement Reference	Purpose	Width (Metres)	Origin	Land Benefited/In Favour Of
E-1	POWERLINE FOR THE TRANSMISSION OF ELECTRICITY	SEE DIAG.	AF491625Y	SPI ELECTRICITY PTY LTD
E-2	DRAINAGE	SEE DIAG.	PS632968A (STAGE 2)	LOTS ON PS632968A
E-3	POWERLINE FOR THE TRANSMISSION OF ELECTRICITY	SEE DIAG.	AF491625Y	SPI ELECTRICITY PTY LTD
	DRAINAGE	SEE DIAG.	PS632968A (STAGE 2)	LOTS ON PS632968A
E-4	POWERLINE FOR THE TRANSMISSION OF ELECTRICITY	SEE DIAG.	PS632968A (STAGE 1)	LOTS ON PS632968A
E-5	POWERLINE FOR THE TRANSMISSION OF ELECTRICITY	SEE DIAG.	PS632968A (STAGE 1)	LOTS ON PS632968A
	POWERLINE FOR THE TRANSMISSION OF ELECTRICITY	SEE DIAG.	AF491625Y	SPI ELECTRICITY PTY LTD
E-8	TRANSMISSION OF ELECTRICITY	SEE DIAG.	C/E AQ240431V	AUSNET ELECTRICITY SERVICES PTY LTD
E-9	TRANSMISSION OF ELECTRICITY	SEE DIAG.	C/E AQ242860K	AUSNET ELECTRICITY SERVICES PTY LTD
E-15	DRAINAGE	SEE DIAG.	THIS PLAN	LOTS ON PS632968A
E-16	TRANSMISSION OF ELECTRICITY	SEE DIAG.	C/E AQ242860K	AUSNET ELECTRICITY SERVICES PTY LTD
	DRAINAGE	SEE DIAG.	THIS PLAN	LOTS ON PS632968A

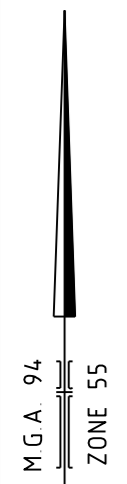
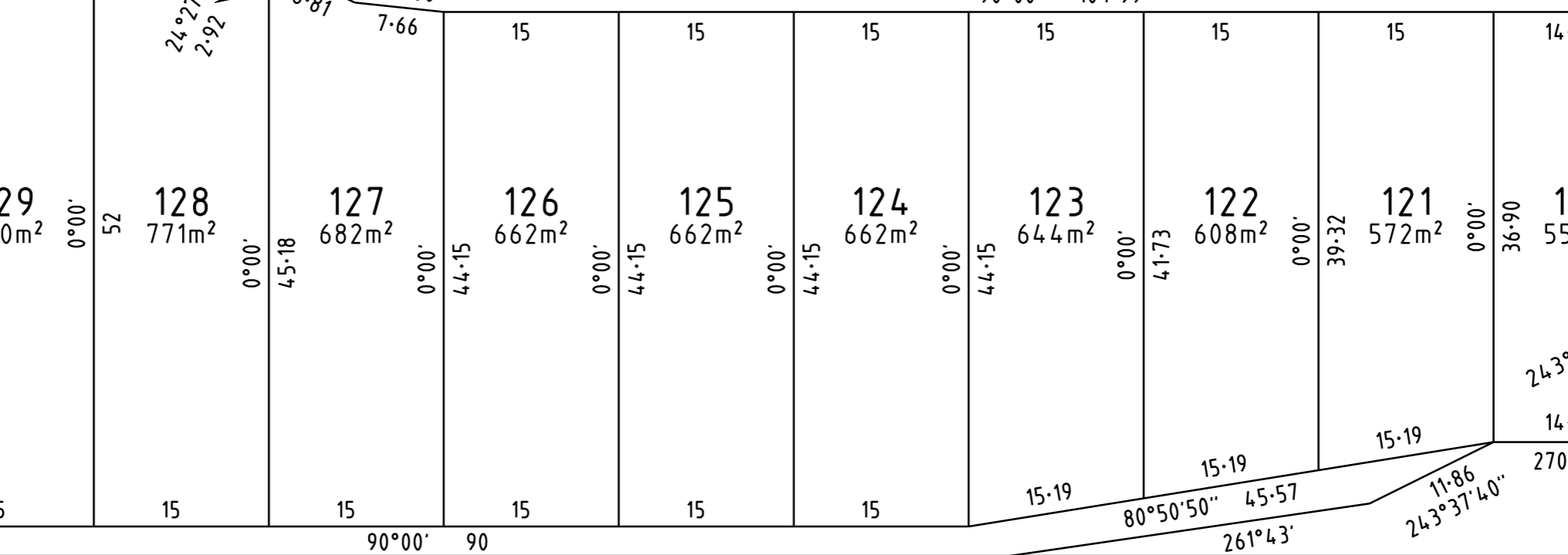
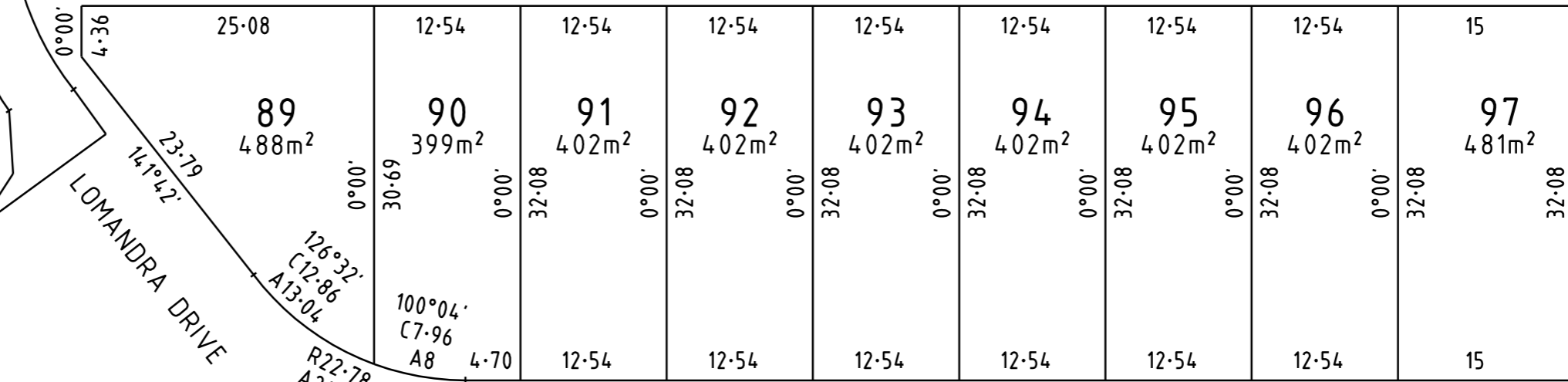
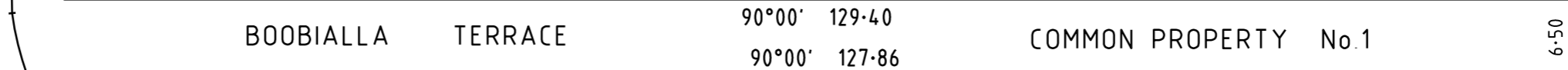
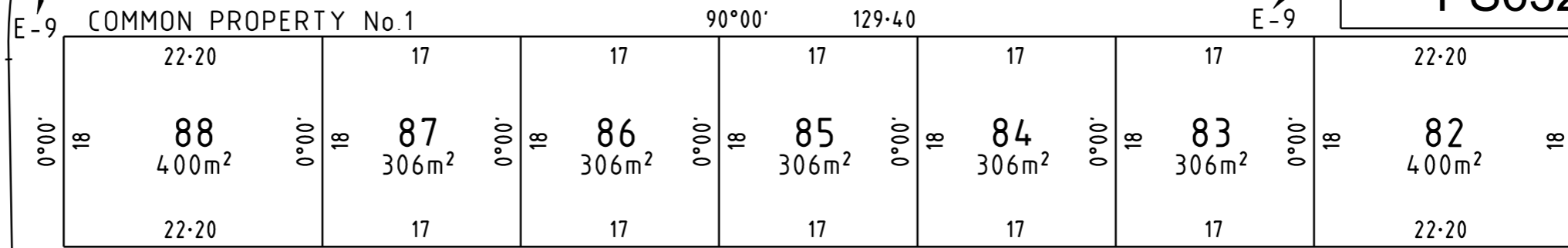




KEY DIAGRAM
 FOR ENLARGEMENT OF LOTS 82-97 (BOTH INCLUSIVE),
 LOTS 120-130 (BOTH INCLUSIVE), LOT S12,
 COMMON PROPERTY No.1 AND EASEMENTS SEE SHEETS 4-6.

SEE SHEET 5

PS632968A/S5



SEE SHEET 5

SEE SHEET 3

BW Beveridge Williams
 development & environment consultants
 Wonthaggi ph : 03 5672 1505
 www.beveridgewilliams.com.au

SURVEYORS REFERENCE
 1301038 /5

SCALE 1 : 500
 5 0 5 10 15 20
 LENGTHS ARE IN METRES

LICENSED SURVEYOR: ADAM MAHER
 VERSION 2, DATE: 23/7/2021

ORIGINAL SHEET SIZE: A3
 SHEET 6

OWNERS CORPORATION SCHEDULE

PS632968A/S5

Owners Corporation No. 1

Plan No. PS632968A

Land affected by Owners Corporation: ALL LAND AFFECTED BY OWNERS CORPORATION 1 ON PREVIOUS STAGES OF THIS PLAN AND ALL OF THE LOTS IN THE TABLE BELOW
Common Property No.: 1

Limitations of Owners Corporation: Unlimited

Notations

NIL

Totals		
	Entitlement	Liability
This schedule	500	500
Balance of existing OC	1382	1382
Overall Total	1882	1882

Lot Entitlement and Lot Liability

Lot	Entitlement	Liability	Lot	Entitlement	Liability	Lot	Entitlement	Liability	Lot	Entitlement	Liability
82	17	17									
83	16	16									
84	16	16									
85	16	16									
86	16	16									
87	16	16									
88	17	17									
89	19	19									
90	18	18									
91	18	18									
92	18	18									
93	18	18									
94	18	18									
95	18	18									
96	18	18									
97	19	19									
120	19	19									
121	19	19									
122	20	20									
123	20	20									
124	20	20									
125	20	20									
126	20	20									
127	20	20									
128	21	21									
129	21	21									
130	22	22									



Beveridge Williams
development & environment consultants

Melbourne ph : 03 9524 8888

www.beveridgewilliams.com.au

SURVEYORS FILE REFERENCE: 1301038/5

SHEET 1

ORIGINAL SHEET
SIZE: A3

Surveyor: Adam Maher (Wonthaggi)
Surveyor's Version: 2