

<b>PLAN OF SUBDIVISION</b>	<b>EDITION 1</b>	<b>PS632968A/S5</b>
----------------------------	------------------	---------------------

<b>LOCATION OF LAND</b>  PARISH: KIRRAK TOWNSHIP: INVERLOCH SECTION: 5 CROWN ALLOTMENT: 1 (PART) CROWN PORTION: — TITLE REFERENCE: VOL. FOL. VOL. FOL.  LAST PLAN REFERENCE: PS632968A/S4 (LOT S11) PS632968A (LOT A)  POSTAL ADDRESS: LINDSEY CLOSE (at time of subdivision) INVERLOCH 3996   MGA CO-ORDINATES: E: 390840                    ZONE: 55 (of approx centre of land                    N: 5723160                    GDA 2020 in plan)	Council Name: Bass Coast Shire Council  SPEAR Reference Number: S179432T
--	--

<b>VESTING OF ROADS AND/OR RESERVES</b>	<b>NOTATIONS</b>
---	------------------

IDENTIFIER	COUNCIL/BODY/PERSON	LOTS ON THIS PLAN MAY BE AFFECTED BY ONE OR MORE OWNERS CORPORATIONS. SEE OWNERS CORPORATION SEARCH REPORT(S) FOR DETAIL.  LOT NUMBERS 1 TO 81 (BOTH INCLUSIVE), LOTS 98 TO 119 (BOTH INCLUSIVE) AND LOTS S1 TO S11 (BOTH INCLUSIVE) HAVE BEEN OMITTED FROM THIS PLAN.  LOT S12 IS IN 3 PARTS.  RESERVE No.3 IS IN 4 PARTS.
RESERVE No.3	BASS COAST SHIRE COUNCIL	

<b>NOTATIONS</b>	
DEPTH LIMITATION: 15.24m BELOW THE SURFACE	
SURVEY: This plan is based on survey.  STAGING: This is a staged subdivision. Planning Permit No.160229  This survey has been connected to permanent marks No(s). 120  In Proclaimed Survey Area No. —	
CP No.1 DENOTES COMMON PROPERTY No.1	

<b>EASEMENT INFORMATION</b>
-----------------------------

LEGEND: A - Appurtenant Easement E - Encumbering Easement R - Encumbering Easement (Road)

SECTION 12(2) OF THE SUBDIVISION ACT 1988 APPLIES TO ALL THE LAND IN THIS PLAN.

Easement Reference	Purpose	Width (Metres)	Origin	Land Benefited/In Favour Of
SEE PAGE 2 FOR EASEMENT TABLE DETAILS				

<b>Beveridge Williams</b> development & environment consultants  Wonthaggi ph : 03 5672 1505  <a href="http://www.beveridgewilliams.com.au">www.beveridgewilliams.com.au</a>	SURVEYORS FILE REF: 1301038/5 1301038 PSUB STAGE 5.dwg	ORIGINAL SHEET SIZE: A3	SHEET 1 OF 6
	Digitally signed by: Adam Maher, Licensed Surveyor, Surveyor's Plan Version (6), 19/09/2023, SPEAR Ref: S179432T		

EASEMENT INFORMATION

LEGEND: A - Appurtenant Easement E - Encumbering Easement R - Encumbering Easement (Road)

SECTION 12(2) OF THE SUBDIVISION ACT 1988 APPLIES TO ALL THE LAND IN THIS PLAN.

Easement Reference	Purpose	Width (Metres)	Origin	Land Benefited/In Favour Of
E-1	POWERLINE FOR THE TRANSMISSION OF ELECTRICITY	SEE DIAG.	AF491625Y	SPI ELECTRICITY PTY LTD
E-2	DRAINAGE	SEE DIAG.	PS632968A (STAGE 2)	LOTS ON PS632968A
E-3	POWERLINE FOR THE TRANSMISSION OF ELECTRICITY	SEE DIAG.	AF491625Y	SPI ELECTRICITY PTY LTD
	DRAINAGE	SEE DIAG.	PS632968A (STAGE 2)	LOTS ON PS632968A
E-4	POWERLINE FOR THE TRANSMISSION OF ELECTRICITY	SEE DIAG.	PS632968A (STAGE 1)	LOTS ON PS632968A
E-5	POWERLINE FOR THE TRANSMISSION OF ELECTRICITY	SEE DIAG.	PS632968A (STAGE 1)	LOTS ON PS632968A
	POWERLINE FOR THE TRANSMISSION OF ELECTRICITY	SEE DIAG.	AF491625Y	SPI ELECTRICITY PTY LTD
E-8	TRANSMISSION OF ELECTRICITY	SEE DIAG.	C/E AQ240431V	AUSNET ELECTRICITY SERVICES PTY LTD
E-9	TRANSMISSION OF ELECTRICITY	SEE DIAG.	C/E AQ242860K	AUSNET ELECTRICITY SERVICES PTY LTD
E-15	DRAINAGE	SEE DIAG.	THIS PLAN	LOTS ON PS632968A
E-16	POWERLINE	SEE DIAG.	THIS PLAN - SEC. 88 ELECTRICITY INDUSTRY ACT 2000	AUSNET ELECTRICITY SERVICES PTY LTD
E-17	POWERLINE	SEE DIAG.	THIS PLAN - SEC. 88 ELECTRICITY INDUSTRY ACT 2000	AUSNET ELECTRICITY SERVICES PTY LTD
	DRAINAGE	SEE DIAG.	PS632968A (STAGE 2)	LOTS ON PS632968A
E-18	POWERLINE	SEE DIAG.	THIS PLAN - SEC. 88 ELECTRICITY INDUSTRY ACT 2000	AUSNET ELECTRICITY SERVICES PTY LTD
	POWERLINE FOR THE TRANSMISSION OF ELECTRICITY	SEE DIAG.	PS632968A (STAGE 1)	LOTS ON PS632968A
E-19	DRAINAGE	SEE DIAG.	THIS PLAN	BASS COAST SHIRE COUNCIL
E-20	DRAINAGE	SEE DIAG.	THIS PLAN	BASS COAST SHIRE COUNCIL
	TRANSMISSION OF ELECTRICITY	SEE DIAG.	C/E AQ242860K	AUSNET ELECTRICITY SERVICES PTY LTD
E-21	POWERLINE FOR THE TRANSMISSION OF ELECTRICITY	SEE DIAG.	THIS PLAN	LOTS ON PS632968A



**Beveridge Williams**  
development & environment consultants  
Wonthaggi ph : 03 5672 1505  
www.beveridgewilliams.com.au

SURVEYORS REF  
1301038/5

SCALE



ORIGINAL SHEET  
SIZE: A3

SHEET 2

Digitally signed by: Adam Maher, Licensed Surveyor,  
Surveyor's Plan Version (6),  
19/09/2023, SPEAR Ref: S179432T

M.G.A. 94  
ZONE 55

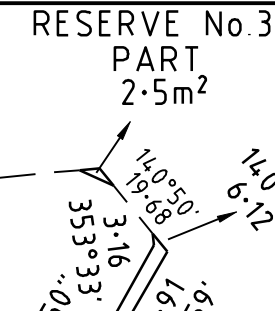
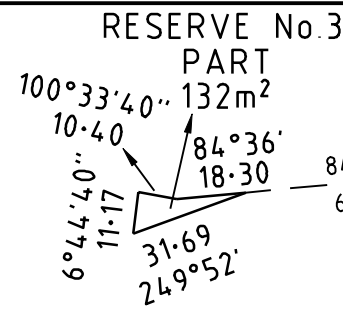
SEE ENLARGEMENT  
No.1  
SHEET 4

S12  
PART  
2837m<sup>2</sup>

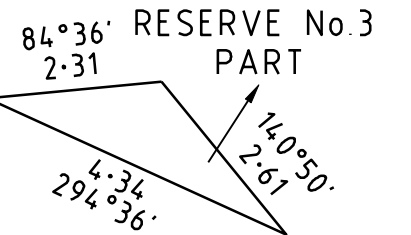
KARKALLA  
DRIVE

LINDSEY  
CLOSE

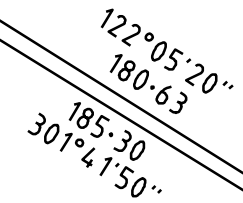
S12  
PART  
2191m<sup>2</sup>



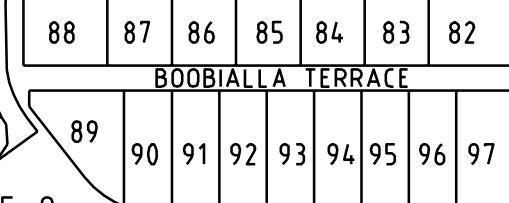
SEE ENLARGEMENT  
NOT TO SCALE



RESERVE No.3  
PART  
904m<sup>2</sup>



COMMON  
PROPERTY No.1  
6628m<sup>2</sup>



GAHNIA  
WAY

COMMON PROPERTY No.1  
(STAGE 4)

S12  
PART

2.826ha  
OVERALL 3.329ha

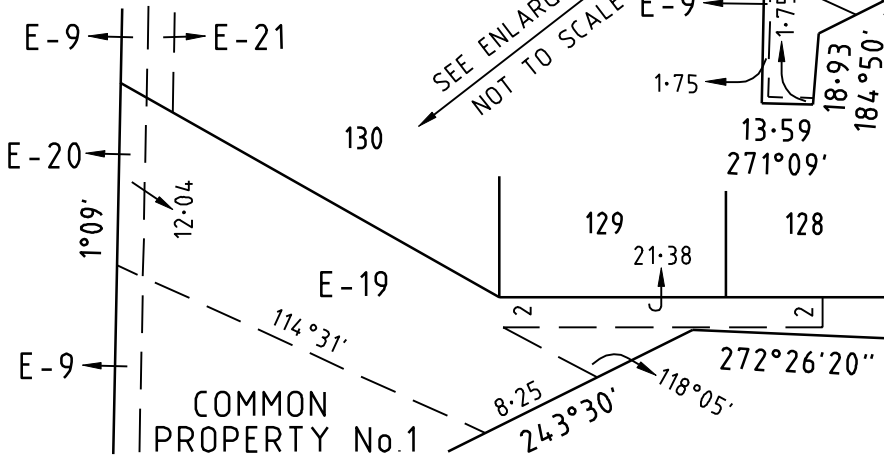
RESERVE No.3  
PART  
4861m<sup>2</sup>

COMMON PROPERTY No.1  
(STAGE 1)

COMMON  
PROPERTY No.1  
1250m<sup>2</sup>

KEY DIAGRAM

FOR ENLARGEMENT OF LOTS 82-97 (BOTH INCLUSIVE),  
LOTS 120-130 (BOTH INCLUSIVE), LOT S12,  
COMMON PROPERTY No.1 AND EASEMENTS SEE SHEETS 4-6.



**BW** Beveridge Williams  
development & environment consultants  
Wonthaggi ph : 03 5672 1505  
www.beveridgewilliams.com.au

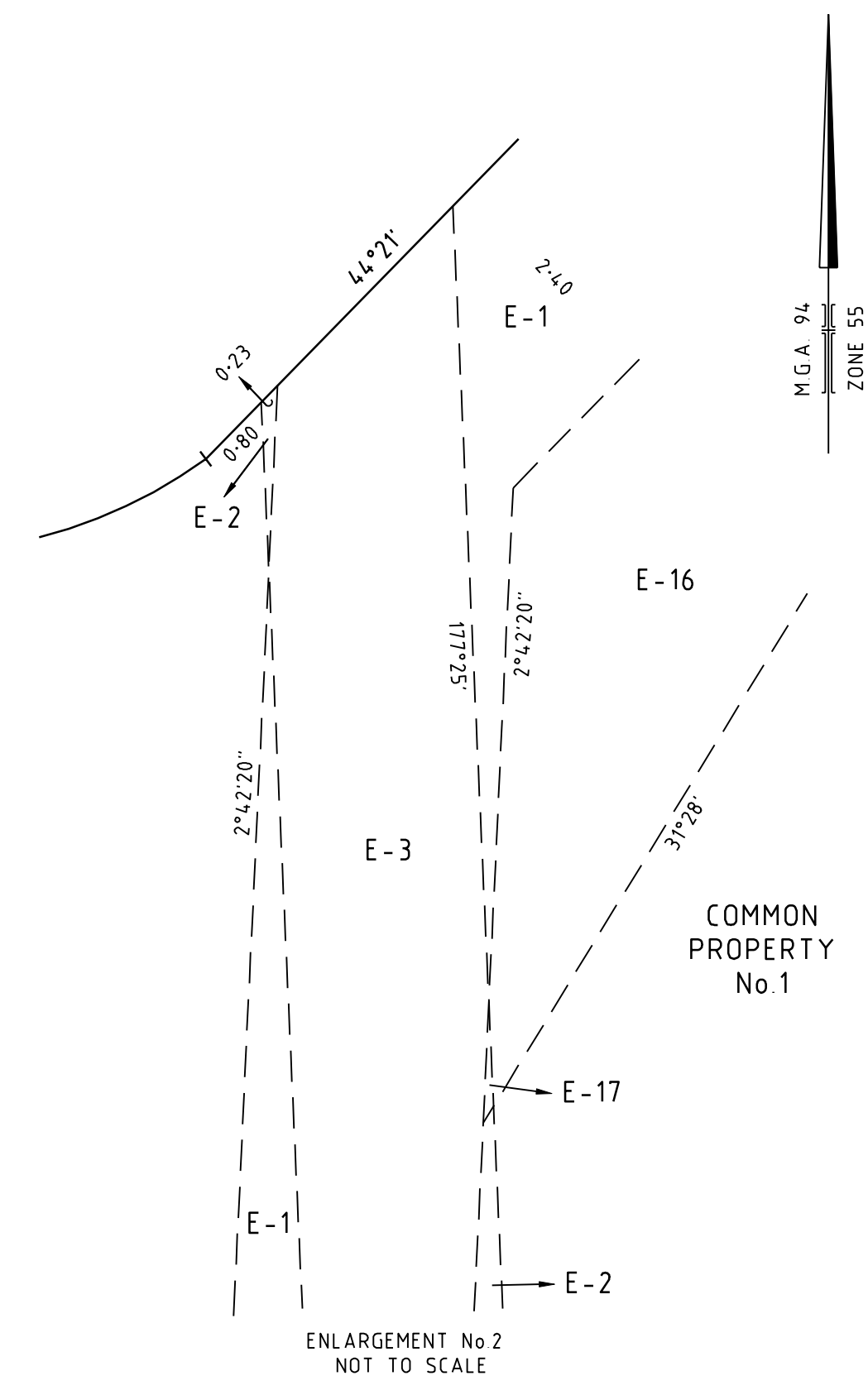
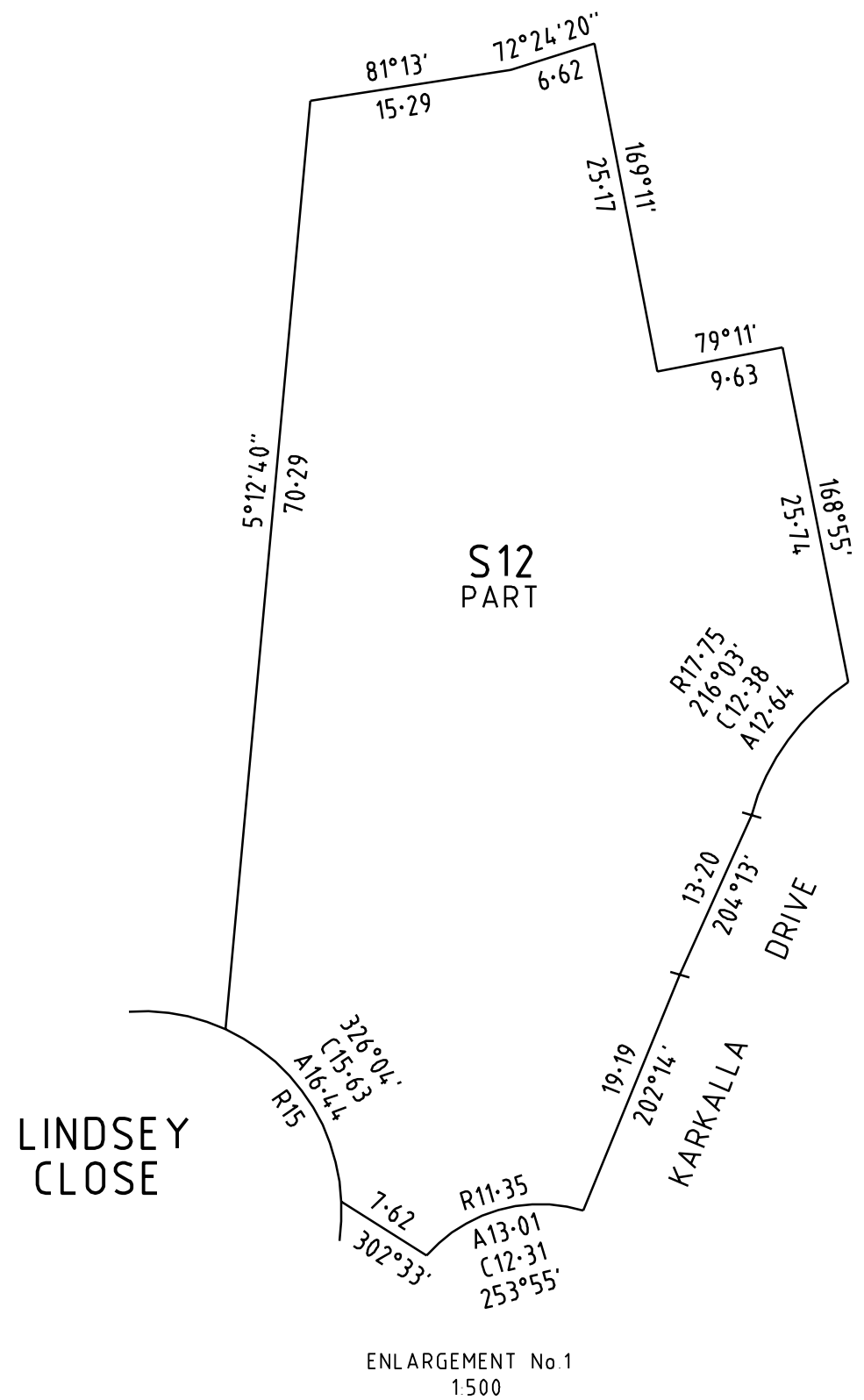
SURVEYORS  
REFERENCE  
1301038  
/5

SCALE  
1 : 2000  
20 0 20 40 60 80  
LENGTHS ARE IN METRES

ORIGINAL SHEET  
SIZE: A3

SHEET 3

Digitally signed by: Adam Maher, Licensed Surveyor,  
Surveyor's Plan Version (6),  
19/09/2023, SPEAR Ref: S179432T



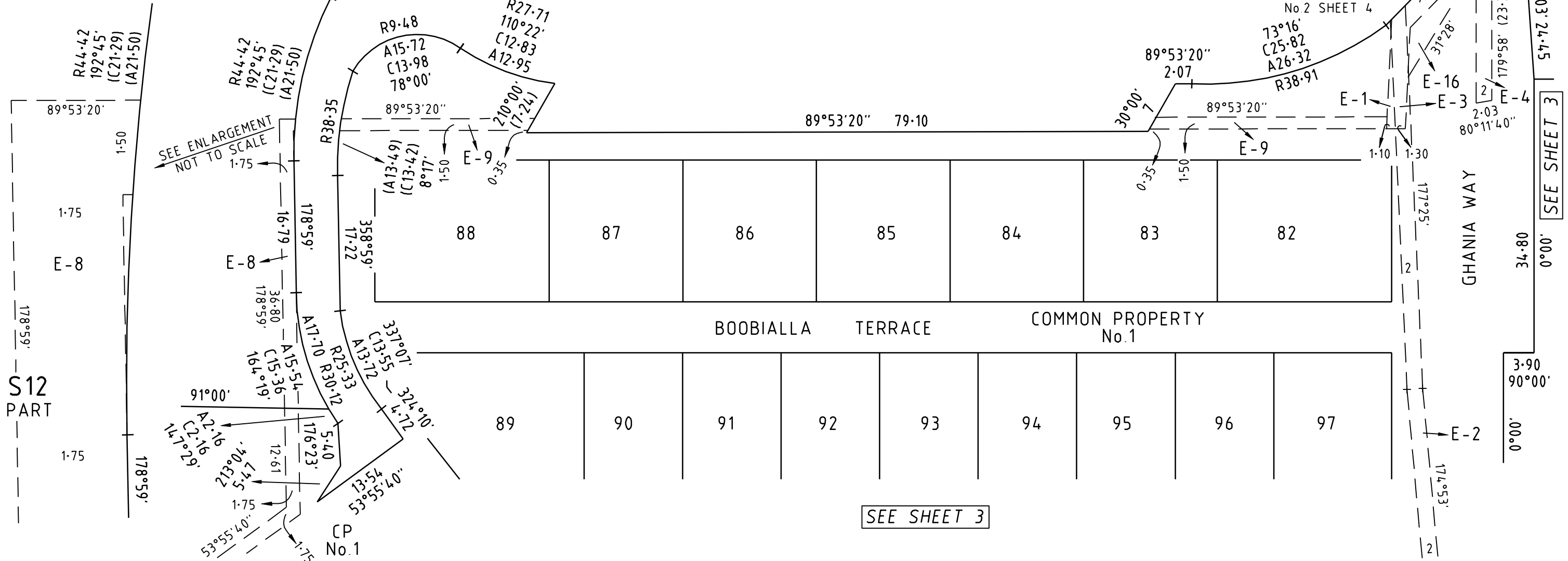
SEE SHEET 4

LINDSEY CLOSE

S12 PART

S12 PART

M.G.A. 94  
ZONE 55



**BW** Beveridge Williams  
development & environment consultants  
Wonthaggi ph : 03 5672 1505  
www.beveridgewilliams.com.au

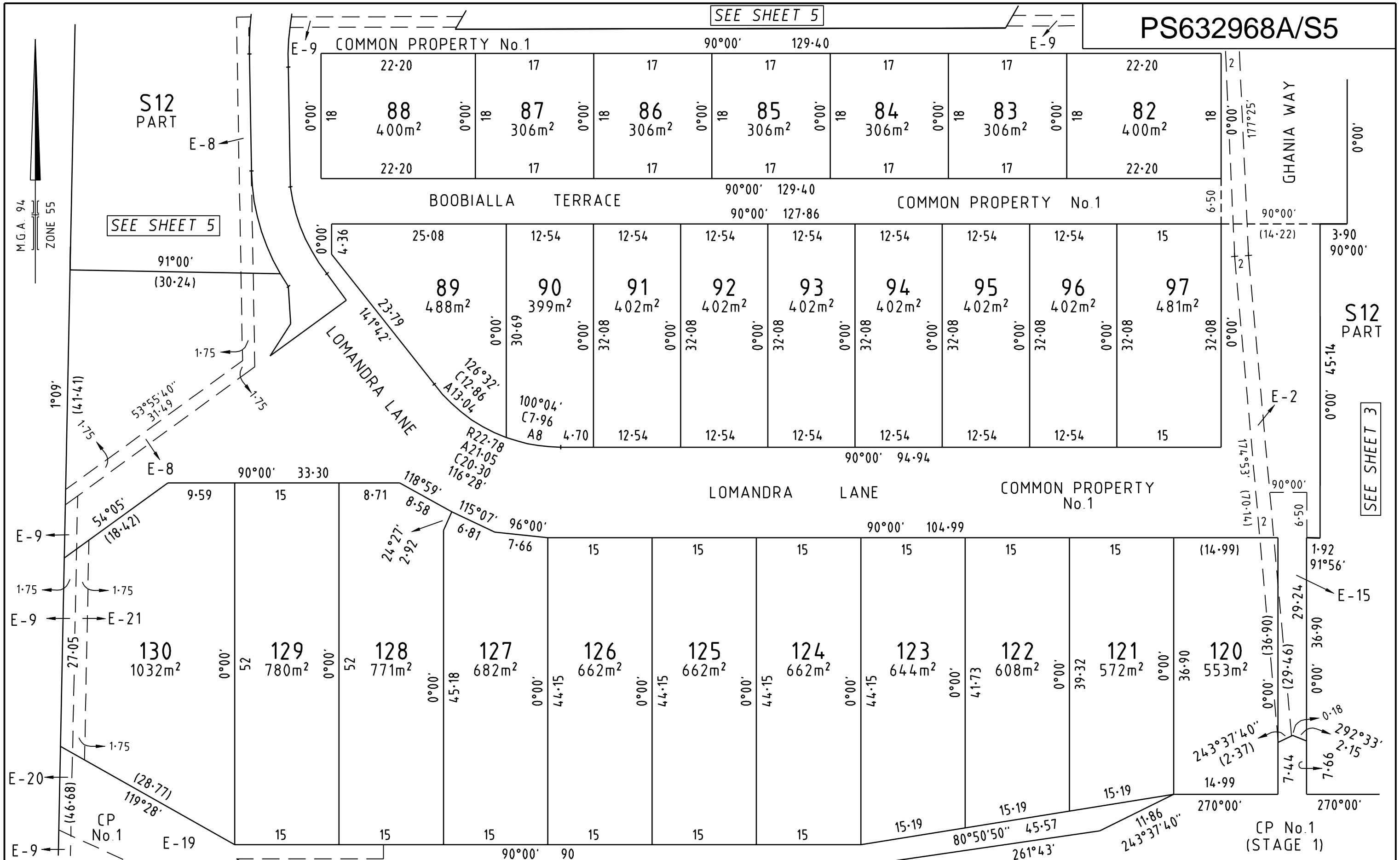
SURVEYORS REFERENCE  
1301038 /5

SCALE 1 : 500  
5 0 5 10 15 20  
LENGTHS ARE IN METRES

Digitally signed by: Adam Maher, Licensed Surveyor,  
Surveyor's Plan Version (6),  
19/09/2023, SPEAR Ref: S179432T

ORIGINAL SHEET SIZE: A3  
SHEET 5

SEE SHEET 5



M.G.A. 94  
ZONE 55

SEE SHEET 5

SEE SHEET 3

**BW** Beveridge Williams  
development & environment consultants  
Wonthaggi ph : 03 5672 1505  
www.beveridgewilliams.com.au

SURVEYORS  
REFERENCE  
1301038  
/5

SCALE  
1 : 500  
5 0 5 10 15 20  
LENGTHS ARE IN METRES

Digitally signed by: Adam Maher, Licensed Surveyor,  
Surveyor's Plan Version (6),  
19/09/2023, SPEAR Ref: S179432T

ORIGINAL SHEET  
SIZE: A3  
SHEET 6

# OWNERS CORPORATION SCHEDULE

PS632968A/S5

Owners Corporation No. 1

Plan No. PS632968A

Land affected by Owners Corporation: ALL LAND AFFECTED BY OWNERS CORPORATION 1 ON PREVIOUS STAGES OF THIS PLAN AND ALL OF THE LOTS IN THE TABLE BELOW  
Common Property No.: 1

Limitations of Owners Corporation: Unlimited

Notations  
NIL

Totals		
	Entitlement	Liability
This schedule	510	510
Balance of existing OC	1382	1382
Overall Total	1892	1892

### Lot Entitlement and Lot Liability

Lot	Entitlement	Liability	Lot	Entitlement	Liability	Lot	Entitlement	Liability	Lot	Entitlement	Liability
82	17	17									
83	16	16									
84	16	16									
85	16	16									
86	16	16									
87	16	16									
88	17	17									
89	19	19									
90	18	18									
91	18	18									
92	18	18									
93	18	18									
94	18	18									
95	18	18									
96	18	18									
97	19	19									
120	19	19									
121	19	19									
122	20	20									
123	20	20									
124	20	20									
125	20	20									
126	20	20									
127	20	20									
128	21	21									
129	21	21									
130	22	22									
S12	10	10									



**Beveridge Williams**  
Development and Infrastructure Consultants  
Melbourne ph : 03 9524 8888  
www.beveridgewilliams.com.au

SURVEYORS FILE REFERENCE: 1301038/5

SHEET 1

ORIGINAL SHEET  
SIZE: A3

Digitally signed by: Adam Maher, Licensed Surveyor,  
Surveyor's Plan Version (6),  
19/09/2023, SPEAR Ref: S179432T